

Working with View URL's & Web Parts

Stratum.Viewer 7

Getting Started

- [Access to View URL's & Web Parts](#)
- [Introduction to View URL's](#)
- [Introduction to Web Parts](#)

Tasks

- [Copy a View URL](#)
- [Create a Web Part from a View](#)

Additional Information

Window

- [View URL Window](#)
- [Web Parts Options Window](#)

Advanced Concepts

- [Edit a View URL](#)

Getting Started

Access to View URL's & Web Parts

Access to copying a view's URL is available on any view that displays in the left panel. Also, anyone can perform a Save As Web Part on any view that they have access to from the left panel.



Introduction to View URL's

View URL's can be copied from a View URL window that's accessible from the left panel. You can copy the URL of any view in the left panel, and that URL can be used to build dashboards or shared with other users by email or in shared documents where you have pasted the URL.

Here's an example of the View URL window.



Here is the URL for the view, which was copied from the View URL window.

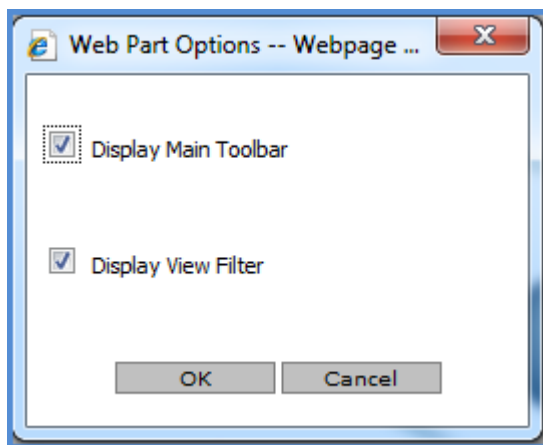
```
http://server-abc:56701/ViewWindow.aspx?ViewId=416&IsHideViewFilter=false&IsHideViewImage=false&IsHideViewName=false&IsHideToolBar=false&IsHideToolBarIcon=false&IsHideExplorer=&IsHideNavigationPanel=
```

The URL includes the view Id, and syntax that tells the URL to run the view with the left panel hidden and these parts of the view displayed: the View Filter section, any image associated with the view if applicable, the view name, and the view toolbar (all icons in it including those to scroll between pages of rows and columns). Also, the syntax tells the URL to use the "User Options" settings of the person running the URL to determine if the navigation panel and view explorer will display. For information about the syntax of a view URL and options for customizing it, see the topic [Edit a View URL](#).

Introduction to Web Parts

Any view listed in the left panel of Stratum.Viewer can be saved as a web part. That action creates a *.dwp file that can be used in a few different ways, giving you the ability to extend the use of the view beyond the Stratum.Viewer interface. The main use is to import the web parts into a Microsoft SharePoint environment or stand-alone SharePoint Services pages.

When you set up a web part, you determine whether or not the implemented web part will display the main toolbar for the view and the View Filter section for the view. The options you choose are stored in a query string as part of the web part *.dwp file.



Tasks

Copy a View URL

1. Navigate to the view in the left panel.
2. Right-click the view name, and select URL.
3. In the [View URL window](#), copy the highlighted URL that displays in the window. Copying method will vary by browser. For example, in Internet Explorer, right-click the URL and choose Copy.
4. Click OK to close window. Paste the URL to the destination where you intend to use it, such as an email or document.

Create a Web Part from a View

1. Navigate to the view in the left panel.
2. Right-click the view name, and select Web Part.
3. Specify options of the web part in the [Web Part Options window](#).
 - **Display Main Toolbar** - Leave selected if you want the grid toolbar displayed as part of the web part. De-select if you don't want the toolbar to display.
 - **Display View Filter** - Leave selected if you want the view filter section of the grid displayed as part of the web part. De-select if you don't want the view filter section to display.
4. Click OK.
5. Click Save when a File Download window displays.
6. Use the Save As window to save the *.dwp file for the web part to the desired location. If you want other users to be able to access the *.dwp file, choose a location to which they have access.
7. When a Download Complete window displays (after the save has been completed), click Close.

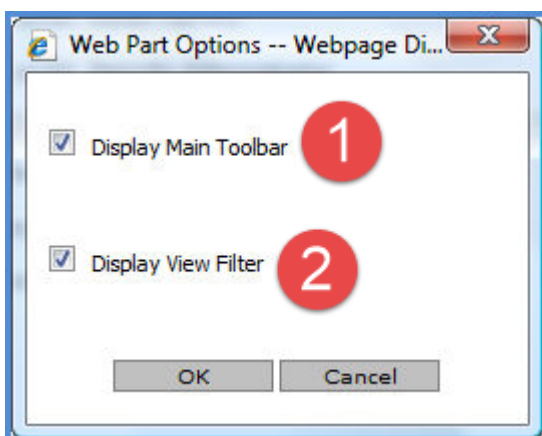
Window

View URL Window



<p>1</p>	<p>URL – A view’s URL shows in this window selected by default, so all you need to do is copy it and paste it into the place from which you want to run the view. For example, right-click and choose Copy then paste the URL into an email.</p> <p>By default, a view’s URL will run the view with the left panel hidden and these parts of the view displayed: the View Filter section, any image associated with the view if applicable, the view name, the view toolbar, and view explorer.</p> <p>If there are parameters defined for the view, the URL will account for one parameter from each parameter group. If a parameter group has multiple parameters, the URL will use the parameter in the group with a default value specified for it. If no parameters for a group have a default value, then the URL will include the first parameter from the group.</p>
<p>2</p>	<p>OK – Click OK to close the window.</p>

Web Parts Options Window



<p>1</p>	<p>Display Main Toolbar – When this option is selected, the grid toolbar displays as part of the web part. De-select if you don't want the toolbar to display.</p>
<p>2</p>	<p>Display View Filter – When this option is selected, the view filter section of the grid displays as part of the web part. De-select if you don't want the view filter section to display.</p>

Advanced Concepts


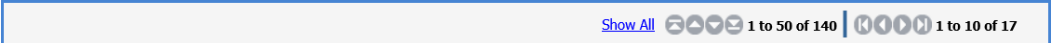
Edit a View URL

The default syntax of a URL copied from the View URL window can optionally be modified to control what parts of Viewer show when someone uses the URL. Here is an example URL, which by default runs the specified view with the left panel hidden and with these parts of the view displayed: the View Filter section, any image associated with the view if applicable, the view name, and the view toolbar (all icons in it including those to scroll between pages of rows and columns). Also by default, the URL uses the “User Options” settings of the person running the URL to determine if the navigation panel and view explorer will display.

```
http://server-xyz:55001/ViewWindow.aspx?ViewId=386&IsHideViewFilter=false&IsHideViewImage=false&IsHideViewName=false&IsHideToolbar=false&IsHideToolbarIcon=false&IsHideExplorer=&IsHideNavigationPanel=
```

Changing the ‘false’ value to ‘true’ for any of the ‘IsHide’ items above will hide the applicable item when someone uses the URL to run a view. For example, changing IsHideToolbarIcon from ‘false’ to ‘true’ causes the toolbar for a view to be hidden when the URL opens the view. See the table below for a description of all parameters of a URL that can be modified.

Syntax to Show or Hide Parts of the View Interface

Item	Format & Values
Top frame and left panel	To hide them, use ViewWindow.aspx in the view URL To show them, use Default.aspx in the view URL
Grid toolbar	<p>Two pieces of syntax are used in combination with each other to control whether all, some, or none of the toolbar shows above a view. They are IsHideToolbar and IsHideToolbarIcon. Examples follow.</p> <p>To hide all parts of the toolbar, use the syntax <code>&IsHideToolbar=true&IsHideToolbarIcon=true</code> in your URL.</p> <p>To show all parts of the toolbar, leave the syntax at its default of <code>&IsHideToolbar=false&IsHideToolbarIcon=false</code> in your URL or exclude that syntax from the URL all together.</p>  <p>To show just the paging icons and hide all other icons in the toolbar, use the syntax <code>&IsHideToolbar=false&IsHideToolbarIcon=true</code> in your URL.</p> 
View name above grid	To hide it, use <code>IsHideViewName=True</code> To display it, either exclude this syntax from the URL all together or use <code>IsHideViewName=False</code>
Logo displayed above a view's grid, to right of the view name	To hide it, use <code>IsHideViewImage=True</code> To display it, either exclude this syntax from the URL all together or use <code>IsHideViewImage=False</code>
	<p>Note: A logo that applies to all views can be defined in the Views section of the Application window by administrators. The logo is an image meant to show up above a view grid, to the right of a view's name. Setting the IsHideViewImage to False won't have</p>

	any impact on views run from a URL unless a logo has also been defined in the Application window.
View Filter section	To hide it, use <code>IsHideViewFilter=True</code> To display it, either exclude this syntax from the URL all together or use <code>IsHideViewFilter=False</code>
View explorer	To let the display of view explorer be controlled by the “User Options” of the person running the URL, leave <code>IsHideExplorer</code> blank or exclude it from the URL. It’s blank by default in URL’s copied from the View URL window that’s accessed from the left panel. <code>IsHideViewExplorer=</code> Set the item to True or False if you want the URL to control the display of view explorer. The URL will ignore the view explorer “User Options” setting of the person running the URL. To hide it, use <code>IsHideExplorer=True</code> To display it, use <code>IsHideExplorer=False</code>
Navigation Panel	To let the display of the navigation panel be controlled by the “User Options” of the person running the URL, leave <code>IsHideNavigationPanel</code> blank or exclude it from the URL. It’s blank by default in URL’s copied from the View URL window that’s accessed from the left panel. <code>IsHideNavigationPanel=</code> Set the item to True or False if you want the URL to control the display of the navigation panel. The URL will ignore the navigation panel “User Options” setting of the person running the URL. To hide it, use <code>IsHideNavigationPanel=True</code> To display it, use <code>IsHideNavigationPanel=False</code>