



Working with Save as Web Parts

Stratum.Viewer 6

Getting Started

- [Access to Web Parts](#)
- [Introduction to Web Parts](#)

Tasks

- [Create a Web Part from a View](#)

Additional Information

Window

[Web Parts Options Window](#)

Advanced Concepts

[Use a Web Part Query String as a URL](#)

Getting Started

Access to Web Parts

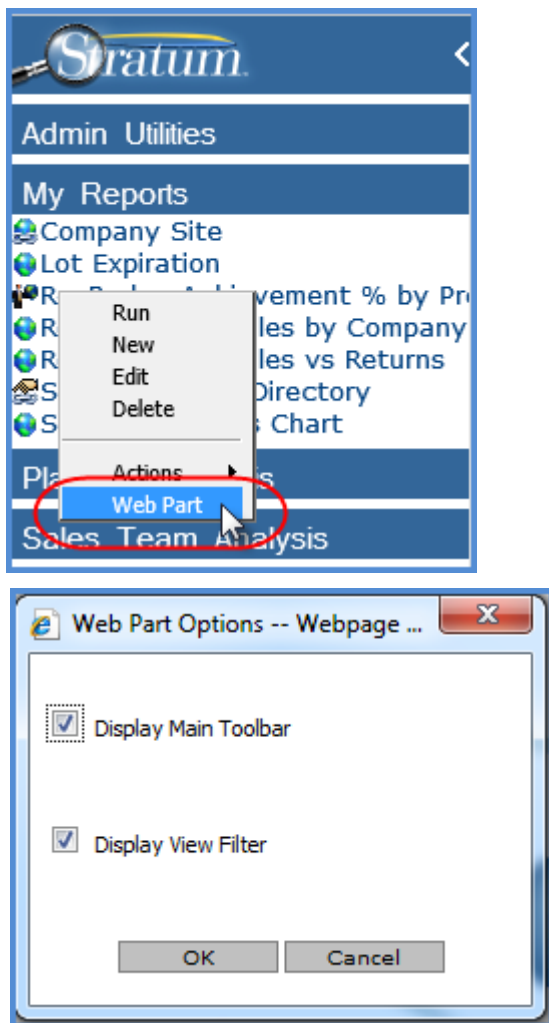
Anyone can perform a Save As Web Part on any view that they have access to from the left panel.

Introduction to Web Parts

Any view listed in the left panel of Stratum.Viewer can be saved as a web part. That action creates a *.dwp file that can be used in a few different ways, giving you the ability to extend the use of the view beyond the Stratum.Viewer interface. You can:

- Import web parts into a Microsoft SharePoint environment or stand-alone SharePoint Services pages.
- Use the query string that is stored in the *.dwp file as a URL for running the view. Slight modifications are needed, which consist of simply replacing each instance of “&” text with just the ampersand “&” symbol. See [Use a Web Part Query String as a URL](#).

When you set up a web part, you determine whether or not the implemented web part will display the main toolbar for the view and the View Filter section for the view. The options you choose are stored in a query string as part of the web part *.dwp file.



Tasks

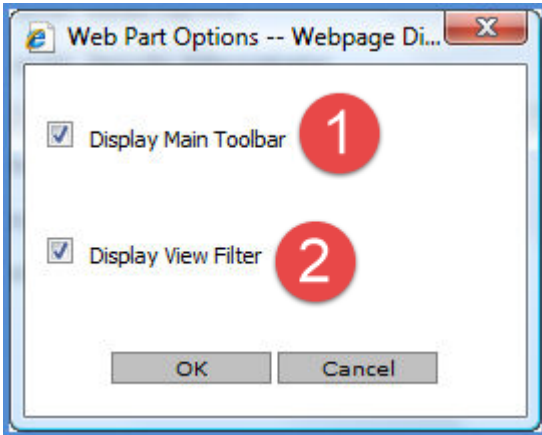
Create a Web Part from a View



1. Navigate to the view in the left panel.
2. Right-click the view name, and select Web Part.
3. Specify options of the web part in the [Web Part Options window](#).
 - **Display Main Toolbar** - Leave selected if you want the grid toolbar displayed as part of the web part. De-select if you don't want the toolbar to display.
 - **Display View Filter** - Leave selected if you want the view filter section of the grid displayed as part of the web part. De-select if you don't want the view filter section to display.
4. Click OK.
5. Click Save when a File Download window displays.

6. Use the Save As window to save the *.dwp file for the web part to the desired location. If you want other users to be able to access the *.dwp file, choose a location to which they have access.
7. When a Download Complete window displays (after the save has been completed), click Close.

Window

Web Parts Options Window



	Display Main Toolbar – When this option is selected, the grid toolbar displays as part of the web part. De-select if you don't want the toolbar to display.
	Display View Filter – When this option is selected, the view filter section of the grid displays as part of the web part. De-select if you don't want the view filter section to display.

Use a Web Part Query String as a URL

When you create a web part from a view, you determine whether or not the web part will display the main grid toolbar for the view and the View Filter section. The options you choose are stored in a query string as part of the *.dwp file that is generated for the web part. The query string is found within the ContentLink section of the *dwp file. Here is an example, with the query string portion in bold text:

```
<ContentLink xmlns="http://schemas.microsoft.com/WebPart/v2/PageViewer">http://server-xyz:60500/ViewWindow.aspx?ViewId=850&IsHideToolbar=false&IsHideViewFilter=true</ContentLink>
```

With a few minor changes, you can take the query string and use it directly in Internet Explorer to run the view. You also can make adjustments to the syntax that controls the display of the toolbar, name of the view and image above the grid, View Filter section, and view explorer. The adjusted URL also could be emailed to other users, and they could run the view using the URL in the email.

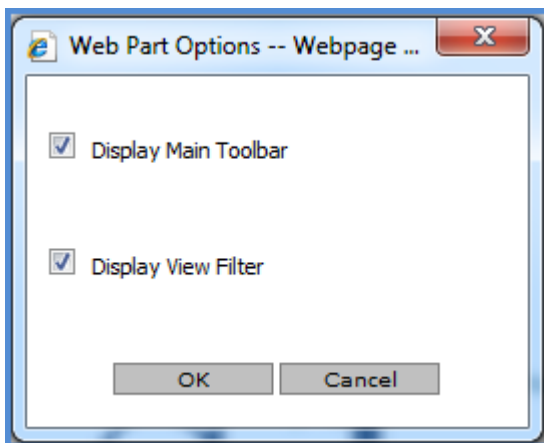
See also [Create a Web Part from a View](#).

Note: Web parts also can be imported into a Microsoft SharePoint environment or stand-alone SharePoint Services pages.

Example 1

Here's an example of a query string for a web part where the user opted to display the toolbar and view filter section.

`http://server-xyz:60500/ViewWindow.aspx?ViewId=17&IsHideToolbar=false&IsHideViewFilter=false`



To use this query string as a URL for running the view, we needed to change each instance of "&" to "&". We left the IsHideToolbar and IsHideViewFilter syntax set to False, which means the toolbar and View Filter will display when the view runs.

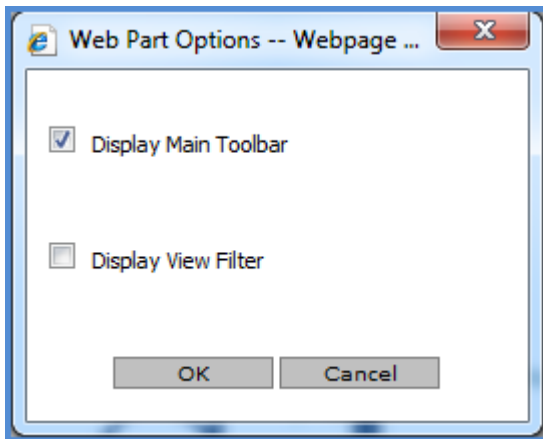
`http://server-xyz:60500/ViewWindow.aspx?ViewId=17&IsHideToolbar=false&IsHideViewFilter=false`

Query strings will run the view with the top frame and left panel hidden. If you prefer they be displayed, change the ViewWindow.aspx in the query string to Default.aspx.

Example 2

Here is an example of a query string for a web part where the user opted to display the toolbar and hide the view filter section.

`http://server-xyz:60500/ViewWindow.aspx?ViewId=850&IsHideToolbar=false&IsHideViewFilter=true`



To use this query string as a URL for running the view, we needed to change each instance of "&" to "&". We left the `IsHideToolbar` set to `False` so the toolbar would still display. We changed the `IsHideViewFilter` syntax from `True` to `False` so it would display as well.

`http://server-xyz:60500/ViewWindow.aspx?ViewId=850&IsHideToolbar=false&IsHideViewFilter=false`

Query strings will run the view with the top frame and left panel hidden. If you prefer they be displayed, change the `ViewWindow.aspx` in the query string to `Default.aspx`.

See the next page for a table that shows all available syntax for use in controlling the display of different parts of the view interface.

Syntax to Show or Hide Parts of the View Interface

Item	Format & Values
Top frame and left panel	To hide them, use ViewWindow.aspx in the query string To show them, use Default.aspx in the query string
Grid toolbar	To hide it, use IsHideToolbar=True To display it, either exclude this syntax from the URL all together or use IsHideToolbar=False
View name above grid	To hide it, use IsHideViewName=True To display it, either exclude this syntax from the URL all together or use IsHideViewName=False
View image above grid	To hide it, use IsHideViewImage=True To display it, either exclude this syntax from the URL all together or use IsHideViewImage=False
View Filter section	To hide it, use IsHideViewFilter=True To display it, either exclude this syntax from the URL all together or use IsHideViewFilter=False
View explorer	To hide it, use IsHideExplorer=True To display it, either exclude this syntax from the URL all together or use IsHideExplorer=False