

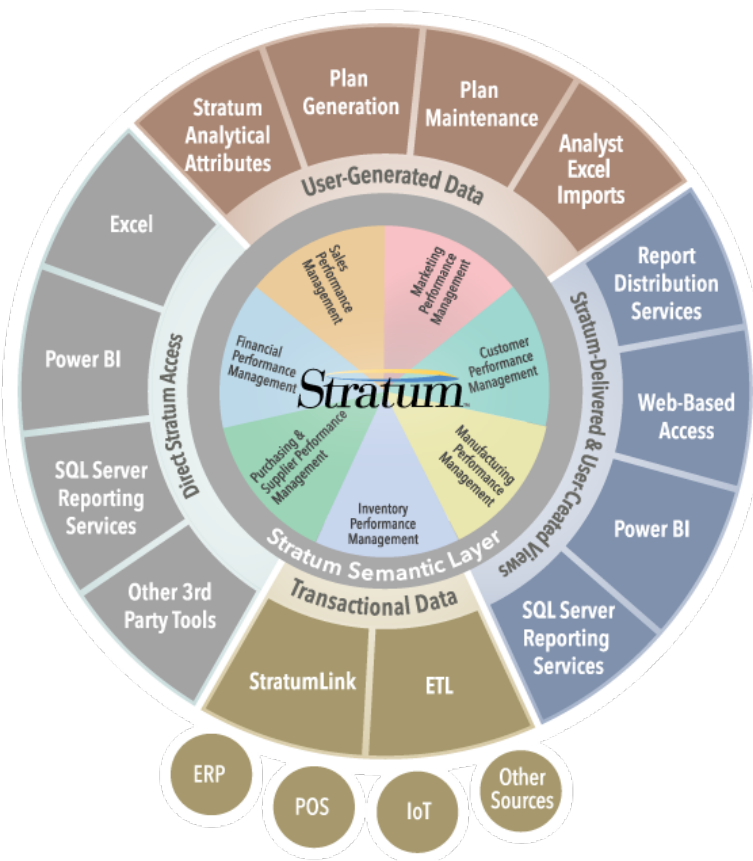


## What's New In Stratum 7.1?

### Stratum Viewer, Dashboards, Power BI Connector, Data Import, & StratumLink

## Evolving Suite of User Controlled Data Offerings

The prior release of Stratum kicked off Silvon's strategy to give everyday users straight forward tools for controlling and accessing their Stratum data. Our latest offerings further **empower everyday users – helping them accomplish analyst and citizen data scientist tasks** without needing to have IT expertise or deep knowledge of the Stratum database. **Dashboards, Data Import, Silvon Stratum Power BI Connector, and StratumLink** are recently introduced tools that elevate this strategy.



**Dashboards** are landing spots for highlighting complimentary Stratum reports, charts, and outside content. Each dashboard is an all-in-one resource that aids in visualization of concepts.

**Power BI Connector** is a bridge between Microsoft Power BI and your Stratum data. Use your existing Stratum reports to pull data from the Stratum Data hub and deliver it directly into Power BI. Build dashboards there with your Stratum data.

**User-curated data housed in Excel spreadsheets can be imported directly into the Stratum Data hub via Viewer's Data Import.** Bring demographics, budgets, market trends, plans, weather, and other outside data that compliments your core, enterprise data into the hub. **Immediately see the imported data in Stratum for centralized analysis** with the rest of your business data.

**StratumLink** is a web-based ETL designed for Stratum power users who need to pull high volumes of additional core business data into the hub from complex data sources. Grab data from ERP, WMS, CRM, or other systems, from standard or custom databases, even from IoT systems. Sources can be on premise or in the cloud. Conveniently access newly

loaded data in context with other enterprise data in your Stratum environment. Adding to the appeal of both Data Import and StratumLink is that they can be **used on demand and don't require direct access to your implementation's server** or specialized programming skills to use them.

Contact us at [info@silvon.com](mailto:info@silvon.com) for more details about Dashboards, Data Import, Power BI Connector, and StratumLink.

## Upping The Convenience Factor In Viewer

A highlight of Version 7.1 Viewer is a new option to **cancel views**. If you run the wrong view or run a view that's taking longer to load than you expected, click the view's Cancel icon. Administrators can monitor and cancel loading views from a View Monitor log. They also can access new user profile management features to keep track of their active user population. Read on to discover other "convenience factor" features added to Viewer, including **searching all views from the Favorite and Recently Used Views window** and **controlling the order of views attached to Actions**.

# Closer Look At Viewer & Connector 7.1

## Support For Data Import Functionality

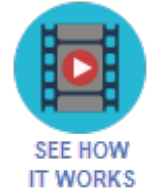
The new Data Import can be launched from the left panel of Viewer. The Data Mapping window guides users through configuring and importing data. The new data is immediately available to use in your views.

**Data Mapping**

Use this preview of your import file to tell us how to treat data during the import. Click the Configuration button if the preview layout doesn't match the import file layout or you want to map to different data than what's provided in the preview lists.

Import Option: Add   Preview of rows 1 - 100

Date	Dimension	Dimension	Ignore	Measure	Measure
yyyy-mm-dd	Ship-To Region	Ship-To Territory		User POS Amt 4	User POS Unit 4
2018-12-30	50	1104	New England	\$10,782	1,984
2018-12-30	50	1105	Great Lakes	\$1,535	257
2018-12-30	51	1102	Gulf Coast	\$4,956	877
2018-12-30	51	1103	Midlantic	\$5,347	988
2018-12-30	52	1101	South Central	\$8,326	1,538
2018-12-30	52	1106	Great Plains		
2018-12-30	53	1100	Southwest		
2018-12-30	53	1107	Northwest		
2018-12-30	54	1111	Eastern Atlantic Provinces		
2018-12-30	55	1108	Western Provinces		
2018-12-30	55	1109	Central Provinces		
2019-01-06	50	1104	New England		
2019-01-06	50	1105	Great Lakes		
2019-01-06	51	1102	Gulf Coast		
2019-01-06	51	1103	Midlantic		
2019-01-06	52	1101	South Central		
2019-01-06	52	1106	Great Plains		
2019-01-06	53	1100	Southwest		
2019-01-06	53	1107	Northwest		
2019-01-06	54	1111	Eastern Atlantic Provinces		
2019-01-06	55	1108	Western Provinces		
2019-01-06	55	1109	Central Provinces		
2019-01-13	50	1104	New England		



**IMPORT CONFIGURATION**

**General**

Import Option: Add   Preview of rows 1 - 100

Target Category: User POS

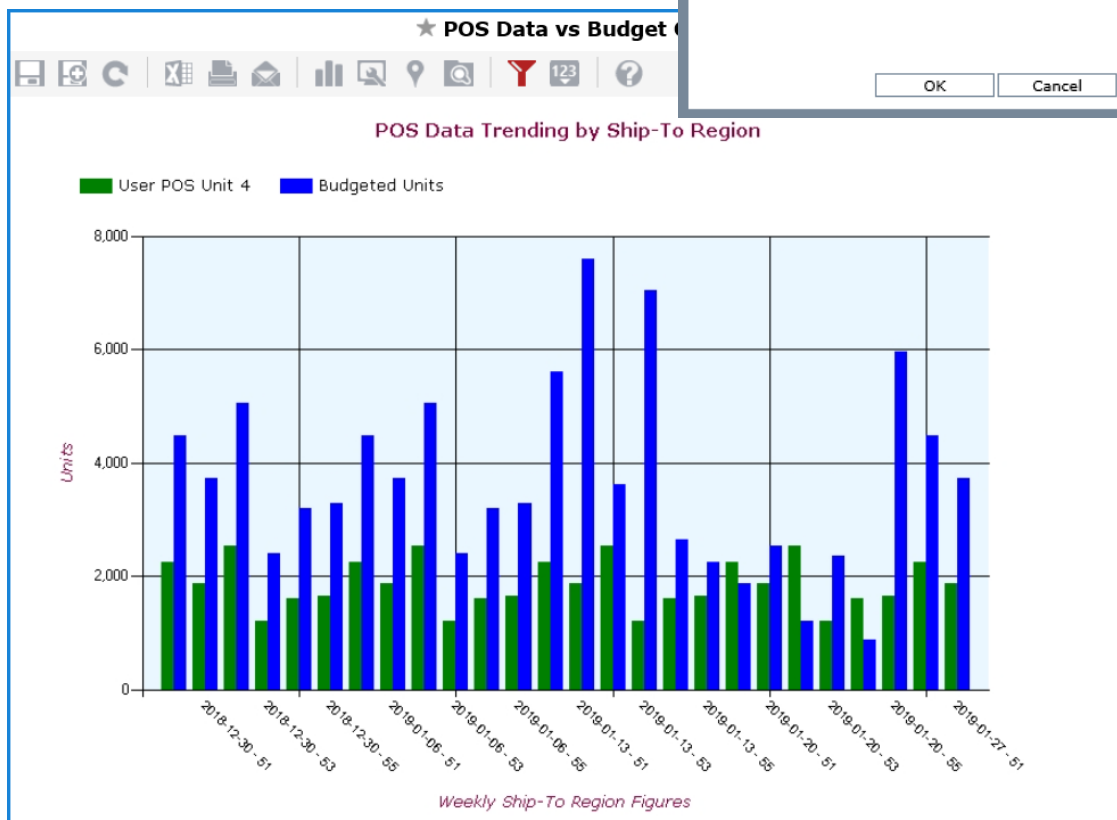
**File Data**

Format: Transactions

Header Rows In File: 1

Row That Contains Transaction Date:

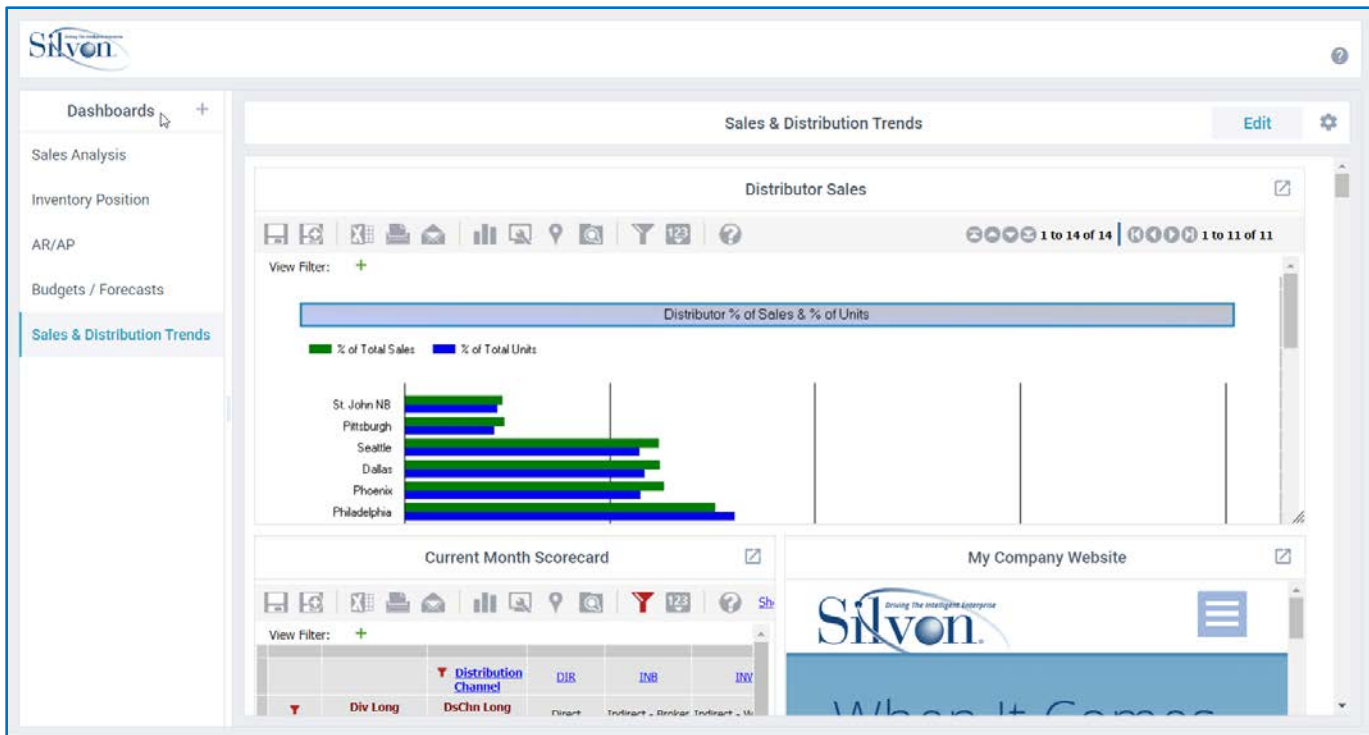
Transaction Date Format:



**Note:** Data Import is available only if your Stratum Server is on a Windows server.

## Use Dashboards To Tell Stories & Monitor Conditions

The Dashboards enhancement for Stratum.Viewer creates new opportunities to leverage existing Stratum content. Tell a story with your content to fosters deeper insights into business performance. Set up a central spot for users to research related pieces of data. See [Stratum Dashboards 1.0](#) and [What's New In Dashboards](#) for more details.

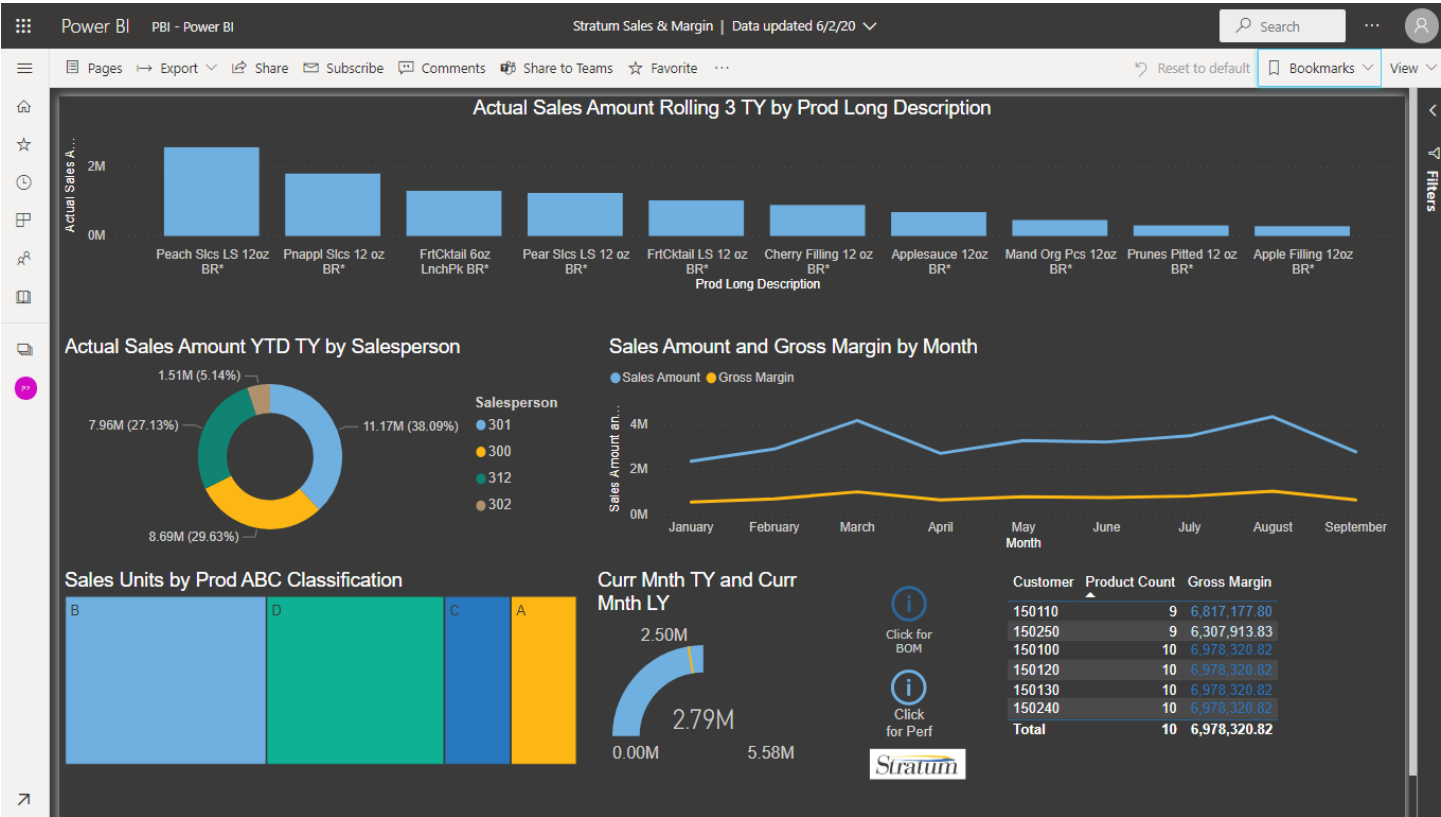


**Note:** Dashboards features were introduced in Version 7.1.1 of Stratum.Viewer.

Extend Reporting & Analysis Options With Silvon Stratum Power BI Connector

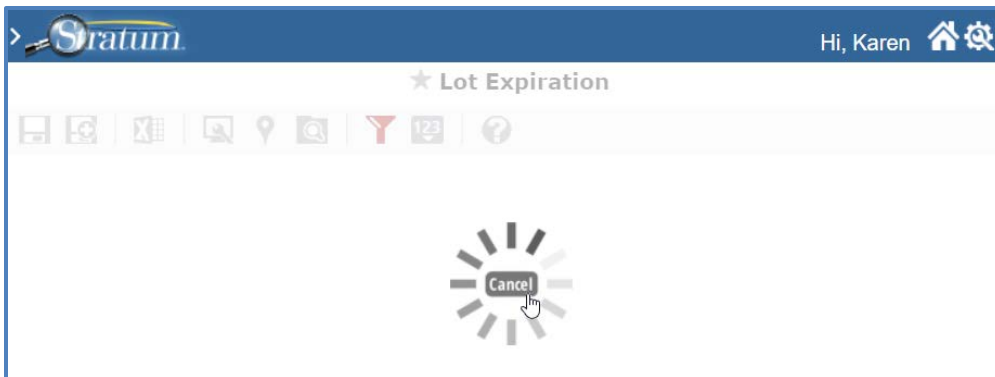
Silvon has paired our Stratum Modern Data Hub with Microsoft Power BI to further enhance your Stratum investment. This powerhouse duo delivers a new way of accessing your Stratum data and sharing it with key business stakeholders. This enhancement delivers on Silvon’s commitment to meet the varied reporting and visualization requirements of your content consumers while guaranteeing a single version of the truth from wherever they access Stratum data.

See the [Stratum Power BI Connector Overview](#) for more information.



## Cancel Views That Are Loading

Did you run the wrong view or click “Show All” data by accident in a large view? Don’t want to wait for the view to load? Click the view’s Cancel icon to exit out of that loading phase and move on to something else.



## Monitor User and View Activity In Viewer

Administrators get visibility into who has and hasn’t been using Viewer in recent days from the User Profile list window. A new “Last Used” column in the window for managing user profiles shows the last time each user accessed Viewer.

Name	Level	Group	Role	Last Used
				09/10/2019 09:21:20
				09/09/2019 15:43:25
				09/12/2019 17:39:45
				09/13/2019 08:23:03
				09/10/2019 08:01:10
				09/12/2019 14:28:23


Another monitoring tool is the View Monitor log. It gives administrators insight into what views are currently loading and who launched the views. If there is a long-running view, administrators can cancel it from this log.

User	Name	Run Time	Start Date	Query Session Id
	Rolling 52 Week View into Future	0.02	09/13/2019 09:50:21	C29C8A90-A84B-4722-BFE
	Lot Expiration	0.01	09/13/2019 09:52:06	C29C8A90-A84B-4722-BFE

A new search field in the Favorite and Recently Used Views window serves as a shortcut for searching among all views in Viewer. Results show in a separate window where you can run a view or do other tasks like open a view for editing.



★ **YTD Achievement % - Oranges**

View Filter: 

<a href="#">Product</a>	Actual Sales Amount YTD	Budget Amount YTD	Achievement Percentage Sales vs Budget

**General**

☒ Lock Down and Columns



## Determine Order Of View Results For Actions

A new feature lets you control the order of views attached to an action. Set up an order that strategically guides users through the output and reflects the story behind your data. Views will appear in that order in the Action's email and Excel file.

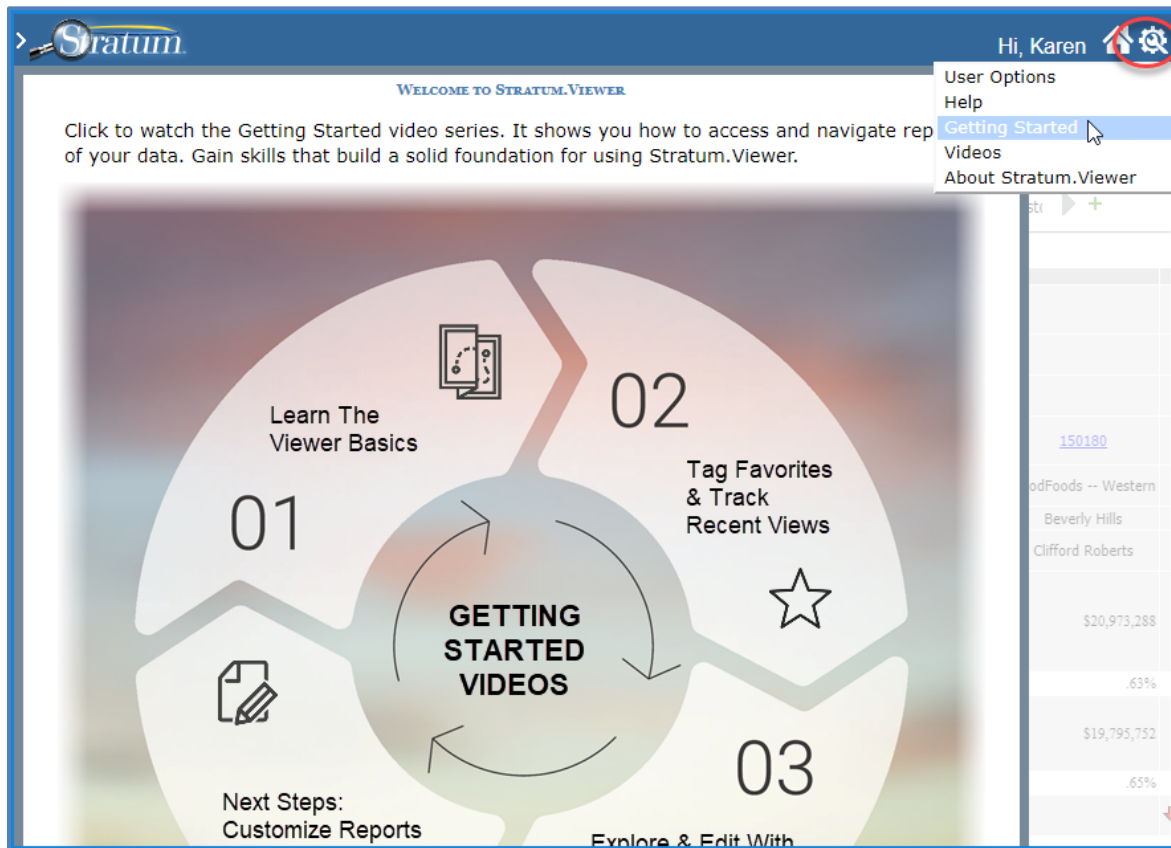
The screenshot illustrates the process of determining the order of view results for actions. It shows three main components:

- ACTION Configuration Window:** This window allows users to configure an action. Key settings include:
  - Single File: Yes
  - Export File Type: Excel Report
  - Include View Details: No
  - Override File Location: (checkbox)
  - Override File Name: (checkbox)
  - Send Email Notification: Yes
  - Email Subject: Daily Sales Revenue Snapshot
  - Email Body: Sales, Revenue, Profit MTD, WTD, Previous Day plus a look at open orders and inventory trends
  - Include Link to View: Yes
  - Include Link to File: Yes
  - Send Email when no Data Exists: No
  - Subject Prefix when no Data Exists: (checkbox)
- EDIT VIEW ORDER Dialog:** This dialog allows users to drag and drop views to change their order. The list of views includes:
  - Current Month Scorecard by Channel
  - Daily Sales by Customer Sold-To and Brand
  - Inventory Valuation Trend
  - MTD Forecast to Budget to Sales Comparison
  - Open AR Aging
  - Private Label Trended Margin Analysis
- Excel Spreadsheet:** The spreadsheet displays the results of the action. The first two columns are labeled "Division" and "Div Long Description". The data is organized into sections: "Foodservice Division", "Distribution Channel", and "DsChn Long Description". The "Current Month Scorecard by" view is highlighted in the bottom row of the spreadsheet.



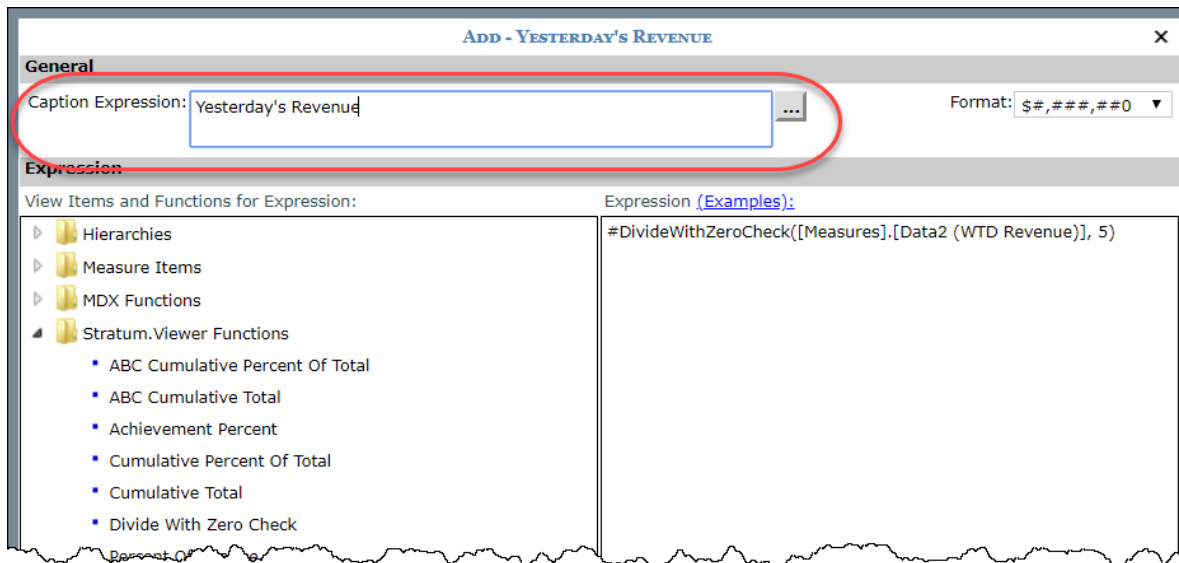
## Getting Started Series To Welcome New Users

A short [video series](#) helps users launch their Viewer experience, showing how to access and navigate data in Viewer. Another series linked to the Getting Started series helps users advance their skills, teaching them how to add data and about other features for customizing views.



## Shortcut For Adding Calculated Measure Item Captions

Adding calculated measure items just got easier—the Caption Expression field in the window for adding/editing calculated measure items has been enabled for editing. Simple text changes can be made by typing directly in that field. Or, still access more sophisticated caption features using the Caption Expression window.

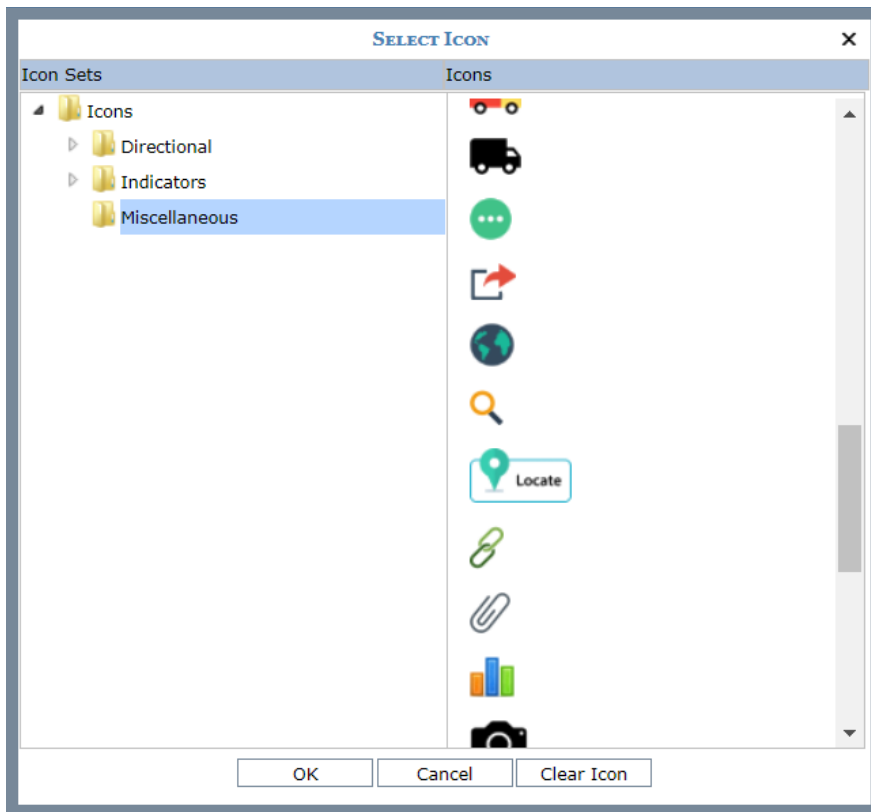




## New Icons To Signal Special Conditions & More In Views

Over 30 new icons are supplied with Viewer's Conditional Formatting feature. Use them to set up traffic lighting or other unique, attention-grabbing scenarios in views.

Find them in the Miscellaneous folder of the Select Icon window, opened from a conditional format's maintenance window.



## Distinguish Between Environments With Custom Logos

A set of Stratum logo images are provided to aid companies in identifying their different Viewer environments. Implement them to show that an environment is a QA, test, development, or InfoCenter instance.



# Closer Look At StratumLink


## Web-Based ETL For Stratum Power Users

StratumLink plays to the strengths and needs of your database-savvy technical analysts. It also gives them some independence from the formal IT-driven process of loading data. Your analysts can easily get transactional data from complex internal and external sources and load it into Stratum without adding to the demands on your IT staff. The analyst identifies the source, pinpoints what they need to bring in, then moves ahead with adding the data whenever they need it – all from a secure, web-based interface.

Create source

Enter source name:  
SalesForce

Select source type:  
SFDCSource  
PgSQLSource  
AWSS3Source  
MSSQLSource  
MySQLSource  
SAPHANASource  
AWSRedshiftSource  
ServiceNowSource  
ServerFSSource  
RESTAPISource  
HubSpotSource  
GoogleAnalyticsS  
ElasticsearchSou  
MelissaDataSour  
DnBSource  
EnterworksSourc  
DB2JTOpenSour  
ZendeskSource  
SnowflakeSource  
AWSSESSource

  
SEE HOW  
IT WORKS

Application: StratumDailyDemo All changes saved

Read only: OFF

Load from GNLoad into Stratum x Load from MFImport into Stratum x Create GNLoad Views x Clear Open Purchase Orders Before Den

Source: SQLSource

Space: dbo

Table: Open PO Header

Alias:

Create target table Append to target table

Target source: Stratum

Target space: dbo

Target table: GNLoad\_OPD

Source columns:

Table name	Column name
Open PO Detail	Order Number
Open PO Detail	Order Line
Open PO Detail	Order Date
Open PO Detail	Units
Open PO Detail	Value
Open PO Detail	Warehouse
Open PO Detail	Planner
Open PO Detail	Commodity Code
Open PO Detail	Product Group

Result columns:

+ Add column

Expression	Column name
'OP'	GNCAT-Category
Hdr.[Order Date]	GNTXND-Date
	GNTXNY-Year
	GNTXNP-Period
Dtl.[Order Number]	GNINVN-Invoice Number
Dtl.[Order Line]	GNLINN-Invoice Line
	GNSEQ1-Sequence 1

Home Workflow

## Recap of Viewer 7.X and 6.X Releases

Version	New & Updated Features
<b>7.1.2</b> <i>Aug 2020</i>	Silvon Stratum Power BI Connector is available for Stratum as of Version 7.1.2. Stratum Power BI Connector provides Stratum Data Hub access to your Power BI Users while capitalizing on your existing Stratum reports and the hub's security model. See also <a href="#">Stratum Power BI Connector Overview</a> . Stratum Dashboards received an upgrade, focusing on interface and online help updates to guide new users through building dashboards. See also <a href="#">What's New In Dashboards</a> .
<b>7.1.1</b> <i>April 2020</i>	Dashboards functionality is available for Stratum.Viewer as of Version 7.1.1. Leverage existing content in new ways that give broader insights into business performance. See also <a href="#">Stratum Dashboards 1.0</a> .
<b>7.1</b> <i>Nov. 2019</i>	Data Import allows you to add data from Excel spreadsheets directly into Stratum. Views in process of loading can be canceled while running them or by administrators from a View Monitor log. New search feature in Favorite and Recently Used Views window is a shortcut for searching all views. A new shortcut for setting up captions has been added to the Add/Edit windows for calculated measure items. New data export properties let you opt to exclude the View Details section from emailed views and Excel exports. The order of views in Action-generated emails and Excel files can be controlled when setting up Actions. The set of icons delivered with Conditional Formats has been expanded with a new set of Miscellaneous icons. A set of custom logos provided in the Viewer application directory can be implemented to distinguish between multiple Viewer environments. Administrators can keep track of who is actively using Viewer from the Last Used details in User Profile maintenance. New users will benefit from watching a short set of Getting Started videos that are available when they first sign in to Viewer (also available from Settings in top toolbar).
<b>7.0</b> <i>Jan. 2019</i>	<a href="#">What's New PDF</a> - Data Copy for users to populate measures with data from existing measures (requires Planning license and implementation where Stratum Server is on a Windows server). Administrator features to manage measure availability for views, use with Planning, and use with Data Copy. Administrator options to manage availability of view groups and dimensions. View management options to filter all existing views into smaller subsets for review according to their active status. Percent of Subtotal function for setting up more kinds of calculations in views.
<b>6.9</b> <i>Aug. 2018</i>	<a href="#">What's New Video</a> and <a href="#">What's New PDF</a> - Copy measure items to create new ones. New measure Items window to work with all measure items in view (re-arrange, edit, add then apply all changes at once). Option for Exports to Excel and Actions to export data as user-friendly report (carry over Viewer formatting and charts) <u>or</u> as unformatted raw data (preferred output for manipulating data after the export or are exporting large volumes of data). Enhanced view explorer allows selection of multiple items to hide, show, or delete at once. Redesigned window for creating/editing calculated measure items. Filter icon in view toolbar is an indicator to show if filters exist in a view. Regrouped icons in view toolbar to aid in locating key editing features. Access to Select View window when attaching drilldown view to an axis or measure items in a view. Window for managing user links. Option to edit time ranges in views when measure item time ranges were invalid and replaced with a system defined alternate.
<b>6.8</b> <i>Jan. 2018</i>	<a href="#">What's New Video</a> , <a href="#">What's New PDF</a> , and <a href="#">Connector Email Notifications Video</a>
<b>6.7</b> <i>Mar. 2017</i>	<a href="#">What's New Video</a> and <a href="#">What's New PDF</a>
<b>6.6</b> <i>July 2016</i>	<a href="#">What's New Video</a> and <a href="#">What's New PDF</a>