



What's New in Silvon's Stratum 7.6

Ready to upgrade? Contact us at info@silvon.com.

Version 7.6 of Stratum reflects Silvon's ongoing commitment to support our customers' cloud computing needs and their evolving application and data management workflows. Data architecture and other timely enhancements give Silvon's hosted and on-premise customers flexible, secure, and streamlined new options for bringing vital data into Stratum for strategic analysis and decision making.



- **New Choices For Importing From Local Data Sources.** Upgrading to Stratum 7.6 means that you can choose from several familiar, industry-standard types of data sources when setting up your off-cloud data imports. A local SQL Server database, text file, CSV file, or local Excel file are all valid options for supplying Stratum with the information to be imported. New email notification options help administrators keep track of all imports. [Learn More.](#)
- **Expanded Support For Cloud Imports & Azure Data Factory.** Use the latest Stratum Cloud Import features in Stratum Viewer to reliably transform and move your transactional data from Azure sources into your Stratum Data Hub. Azure Blob Containers, Azure File Share, Azure SQL Databases, and Azure Data Pipelines are all valid cloud data sources. Also, a new Stratum Cloud API platform provides another option for handling Azure imports or local SQL Server database imports. [New data architecture and Data Steward](#) user designations control access to V7.6 advanced import functionality. [Learn More.](#)
- **New Mapping Templates To Streamline Data Imports.** Create a library of re-usable templates with stored mapping details to automate some key data import setup steps. A template can be selected for future use as often as needed for importing similar types of data or each time new data becomes available for a specific category. [Learn More.](#)



- **Essential Settings Realigned By Admin Workflows.** The revised Application Options window focuses on common settings and opens up control of them to all administrators. They can fine-tune basic settings that impact all users such as the default look and feel of new views (fonts, grid colors, etc.). A new System Configuration window that's reserved for Stratum Security Administrators has security-related and less frequently used settings (for example, license keys and email notification properties). [Learn More.](#)
- **New Tabular Model Database Utility.** Silvon has developed a Create Tabular Database Utility that will generate a tabular model of data from a multi-dimensional database. Silvon's Managed Services team can facilitate a demo of this utility to customers who are interested in previewing their Stratum Data in the tabular format and learning about using that format in popular data visualization tools.

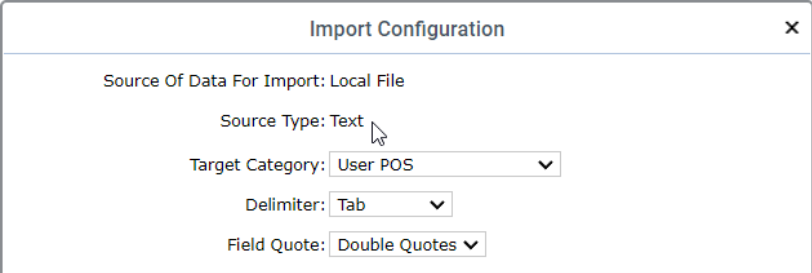
Contact our product experts at info@silvon.com for a demo of Stratum V7.6 and other enhancements from recent releases (such as [V7.5 features](#) of KPI indicators and a Stratum Glossary that has details about all the report-building items in your Stratum Data Hub).

Support For Additional Types Of Local Data Import Sources

For data imports from local sources, Stratum 7.6 gives you more choice for orchestrating data moves into the Stratum Data Hub. More types of data sources are supported when importing data from off-cloud locations. In addition to the standard imports done from local Excel files, you can import from text files, CSV files, and local SQL Server database tables*. A new feature to help track imports are [email notifications](#). They can be set up to keep administrators in the know about imports initiated by other users.

***Note:** A Stratum Cloud Import [license](#) is required for SQL Server database imports. That type of import also can be initiated using the new Stratum Cloud API Platform. See the next section for API details.

Data Import Templates can be utilized with any of these local import sources, as is the case with [Azure imports](#), to automate some common import setup tasks and save you time. See [Data Import Templates](#) for more details.



Import Configuration

Source Of Data For Import: Local File

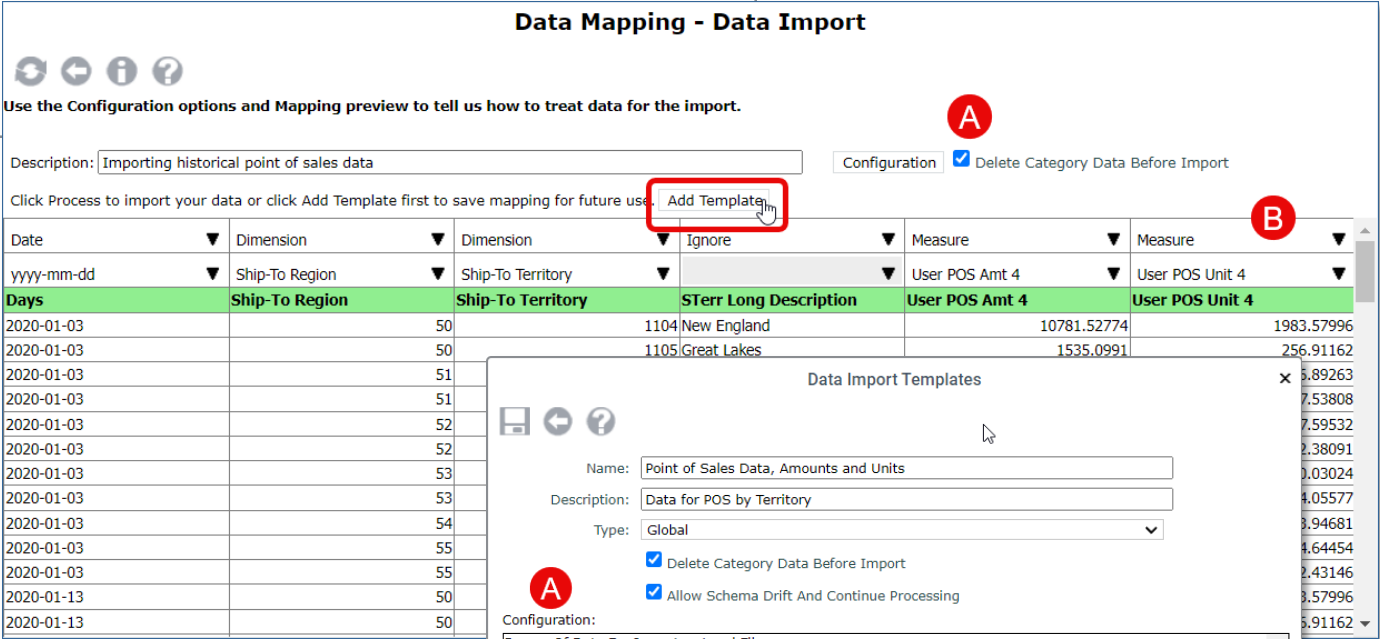
Source Type: Text

Target Category: User POS

Delimiter: Tab

Field Quote: Double Quotes

This import uses a text file with Point of Sales data as its source data. Data configuration and mapping choices about where data gets imported to were initially specified in the Data Mapping window.



Data Mapping - Data Import

Description: Importing historical point of sales data

Configuration Delete Category Data Before Import

Click Process to import your data or click Add Template first to save mapping for future use. Add Template

Date	Dimension	Dimension	Ignore	Measure	Measure
yyyy-mm-dd	Ship-To Region	Ship-To Territory		User POS Amt 4	User POS Unit 4
Days	Ship-To Region	Ship-To Territory	STerr Long Description	User POS Amt 4	User POS Unit 4
2020-01-03		50	1104 New England	10781.52774	1983.57996
2020-01-03		50	1105 Great Lakes	1535.0991	256.91162

Data Import Templates

Name: Point of Sales Data, Amounts and Units

Description: Data for POS by Territory

Type: Global

Delete Category Data Before Import

Allow Schema Drift And Continue Processing

Configuration:

Source Of Data For Import: Local File

Source Type: Text

Target Category: User POS

Delimiter: Tab

Field Quote: Double Quotes

Mapping:

Date	Dimension	Dimension	Ignore	Measure
yyyy-mm-dd (2012-03-01)	Ship-To Region	Ship-To Territory		User POS Amt 4
Days	Ship-To Region	Ship-To Territory	STerr Long Description	User POS Amt 4

Created Date: 05/17/2024 11:21:14

Owner: Karen Sharpey

Last Updated Date: 05/17/2024 11:21:14

Last Updated By: Karen Sharpey

Last Used Date:

Last Used By:

Template ID: 38

From the Data Mapping window, we clicked "Add Template" to save our selections as a template. The new template got applied to the current import for processing it and can be reused for future imports to the same category.

Stratum Cloud Computing & Azure Data Sources

Silvon's Stratum Cloud has been enhanced to facilitate seamless imports from Azure sources into your Stratum Data Hub. Transform and move your cloud-based Azure transactional data into your Stratum Data Hub using either the expanded data import features from the V7.6 Stratum.Viewer interface directly or using Silvon's new Stratum Cloud API Platform. Transactional source data can exist in an Azure Blob Container, an Azure File Share, or an Azure SQL Database.

The screenshot displays the 'Import Configuration' dialog box in the foreground, which is overlaid on the 'Mapping - Data Import' table. The dialog box has a red border around the 'Source Of Data For Import: Azure Blob Container' field. Below this field, the 'Source Type: Excel' is selected. Other fields in the dialog include 'Target Category: User POS', 'Format: Transactions', 'Header Rows In File: 1', 'Row That Contains Transaction Date:', and 'Transaction Date Format:'. The background table, titled 'Mapping - Data Import', shows a list of products with columns for 'Prod Long Description', 'Actual Sales Sales Amount', and 'Actual Sales Sales Units'. The table has a green header row and several data rows.

Product	Prod Long Description	Actual Sales Sales Amount	Actual Sales Sales Units
914001	Pear Hlvs LS 12 oz BR* 0A	738.90	16.56
914002	Peach Hlvs HS 12 oz BR* 0A	1855.11	41.4
914003	Applesauce 12oz BR* 0A	6848.84	157.32
620A914008	Pear Slcs LS 12 oz BR* 0A	743.77	16.56
620A914016	Peach Slcs LS 16 oz BR* 0A	3205.35	57.96
620A914025	Mand Org Pcs 12oz BR* 0A	3994.38	80.04
620A914215	Tropical Mix LS 12oz BR* 0A	8544.18	176.64

Cloud Import Methods Include New API

Create, process, and check the status of Azure imports interactively from Viewer or by using the Stratum Cloud API's URL calls. Note that URL calls from the API also can be used to initiate imports that use local SQL Server database tables as their source of data.

- Like Viewer, the API offers flexible approaches and helpful efficiencies for imports. The API can automatically map the selected source data to applicable targets (dimensions and measures) in your data hub. Alternatively, you can tell the API to use a Data Import template from Viewer for mapping.
- The Stratum Cloud API also can be used by an app, website, or services — for example with an Azure portal's Azure Data Factory. In that scenario, the API could be called upon to import data from an Azure Data Pipeline. Features specific to your implementation, in this case your Azure Data Factory, would be used either to run the API-driven import right away or to schedule it for processing later according to the event criteria within your app.

Templates & Admin Controls For Cloud Imports

Add efficiencies to any of your cloud or local imports with Stratum's new Data Import Template functionality. Templates set up once can be reused as often as needed to automatically handle basic configuration and mapping steps for your data imports. See [Data Import Templates](#) for more details.

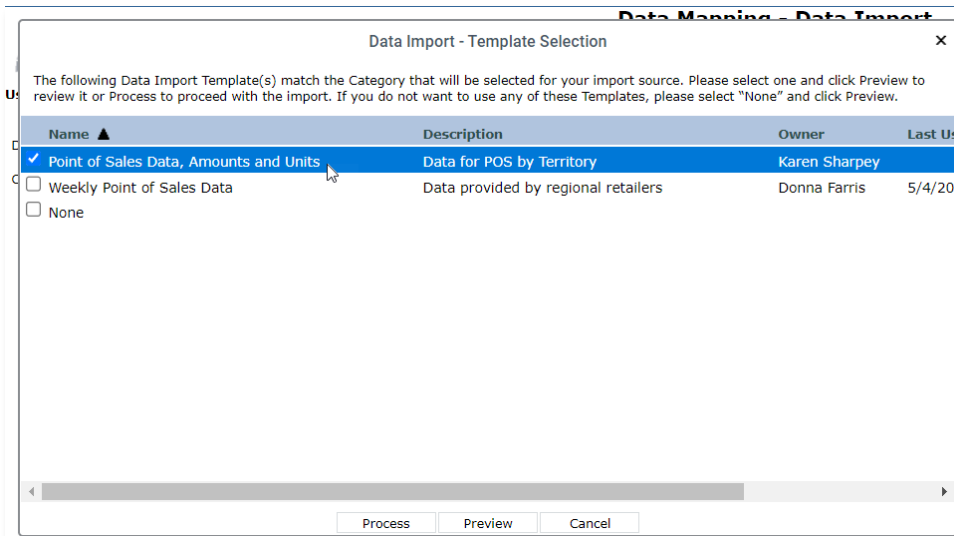
Silvon has implemented an "Enhanced Data Architecture" model to support the latest version of Data Import features. Also, a new type of user designation known as a "Data Steward" has been introduced to control access to cloud import features. [Learn More](#).

Using Data Import Templates To Automate Repetitive Tasks

Data Import Templates are a time-saving feature of Stratum 7.6. They conveniently capture details for mapping transactional data to your Stratum Data Model. Templates can be re-used as often as you like for subsequent imports of similar data. They're ideal for handling data from the same category that needs to be updated regularly over time as new data becomes available — saving you from manually managing repetitive tasks for each round of data you import into the Stratum Data Hub. Templates can be used for imports done from Stratum Viewer or with the Stratum Cloud API.

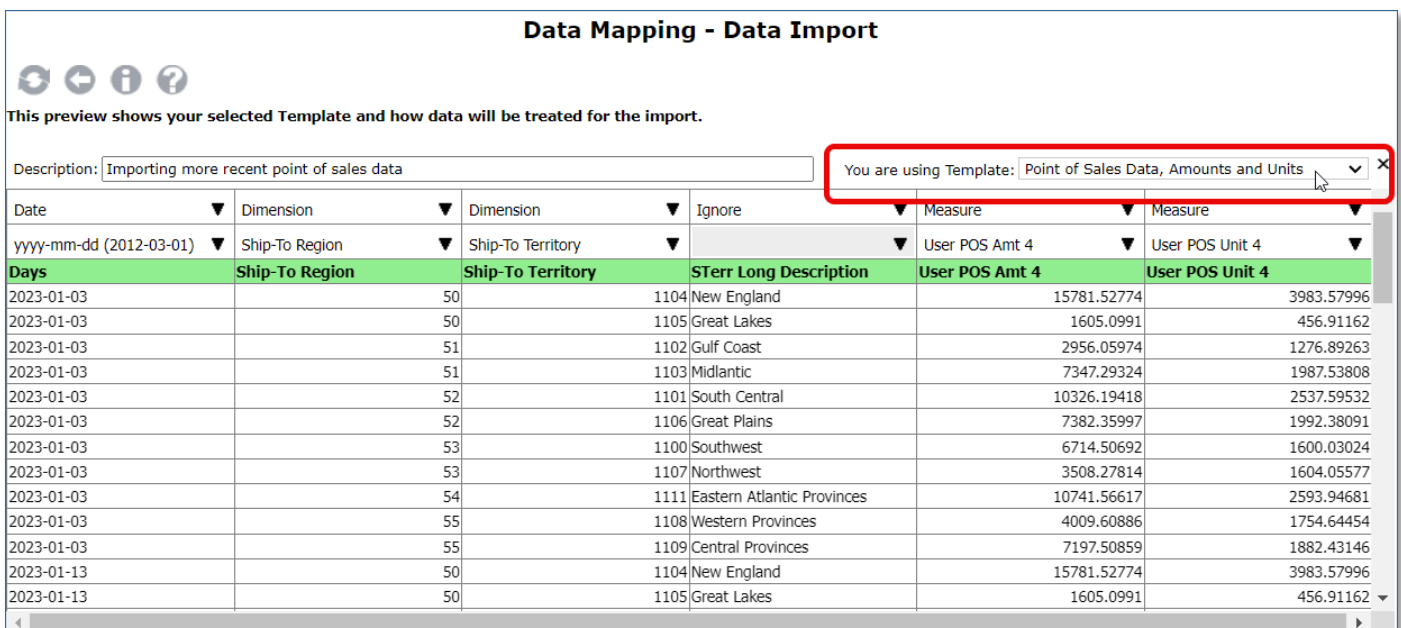
- Templates tell Stratum about your data — the type of file it's being imported from, the category it's for, and the transaction date format. And, they tell Stratum how to treat the data during an import — such as identifying the target measures to import data into and whether to replace or add to existing category data.
- Templates can handle schema shifts as part of their automatic data mapping features, making for smooth handling of structural changes to your transactional data.

As you build your library of templates and initiate new data imports, Stratum will recommend templates that are a match for your next import. Pick a template to handle mapping steps for you, then process the import. You can optionally preview the import to see how it looks with the selected template applied to it and to give your import a custom description.



This Point of Sales import uses a Data Import Template we created while setting up a previous import. There's new data to import from an Excel file.

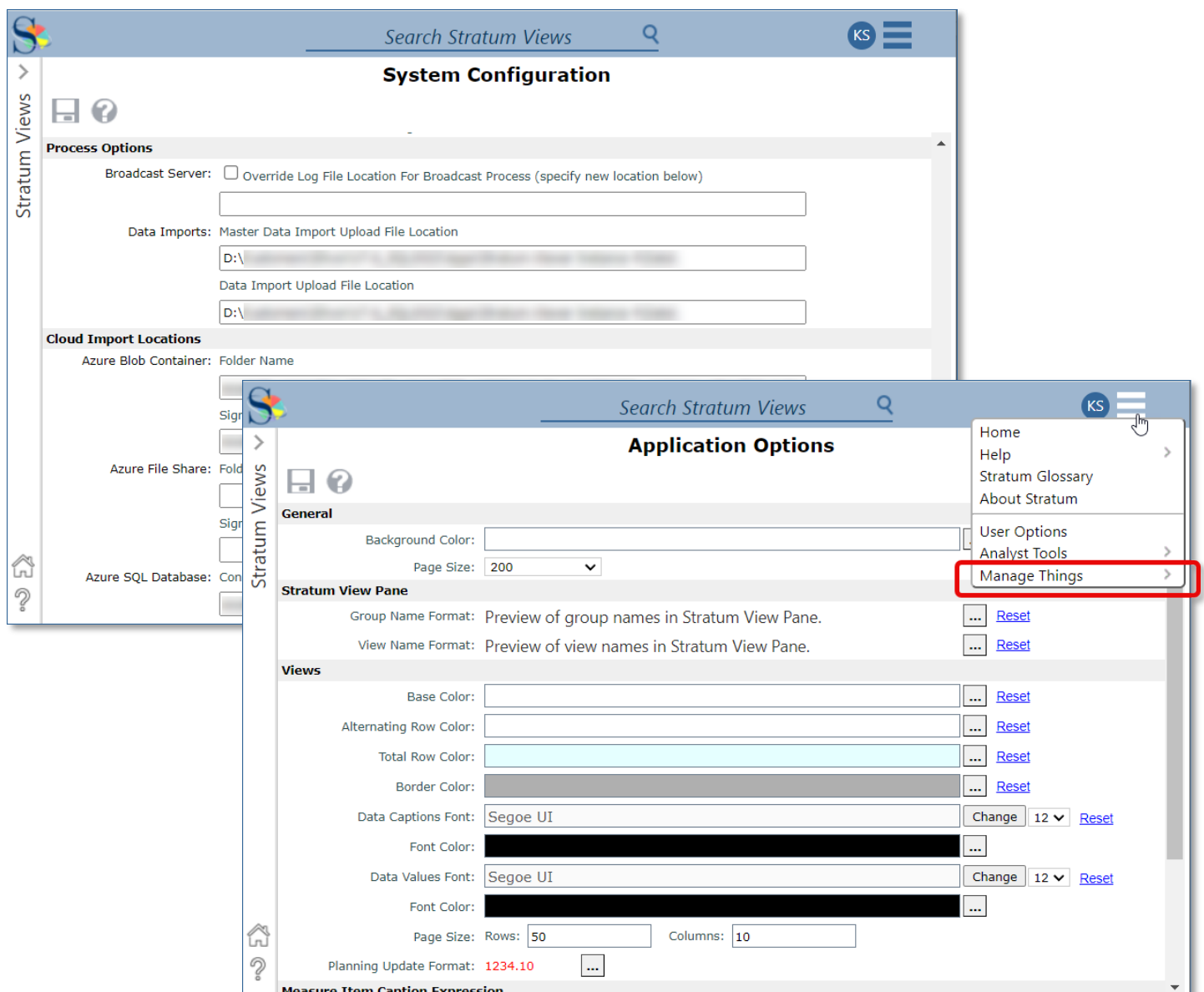
Stratum Viewer shows us templates that exist for the category. We picked one, previewed our new data with it in the Data Mapping window, and processed the import from there.



Admin Settings Reorganized To Match Workflow & Security Needs

Administrative tasks for managing a Stratum environment were split between an existing window and a new window for added convenience and security. Users with rights to access the windows can open them from the Manage Things sub-menu off the main Stratum menu.

- **Application Options:** Common settings for managing the look and feel of Stratum are in the revised Application Options window. This change allows for a more focused presentation of the settings and opens up access to them to all levels of Stratum administrators. Properties controlled from this window determine the look of the Stratum View Pane (where views are accessed), the default look of view grids (row color, fonts, etc.), and other default settings that get applied universally to items or windows in Stratum.
- **System Configuration:** Properties used less frequently and that contain private details about an environment, such as app license keys, are in the new System Configuration window. Access is restricted to Security Administrators to protect sensitive environment details. From this window, a Security Administrator can manage tasks such as defining the locations of valid Azure and SQL data import sources and setting up email notifications that inform designated recipients whenever someone processes an action or data import.



Note: Properties for selecting an image to associate with views or use as the application background have been removed from Application Options in Viewer.

Other Changes In Stratum 7.6

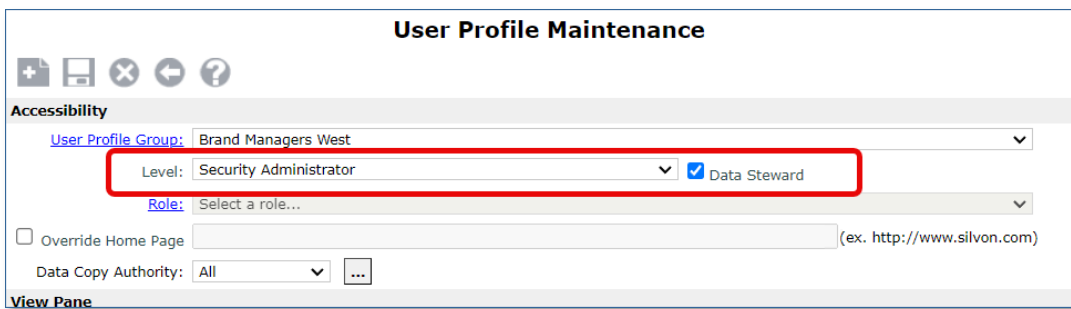
Here are changes that administrators will see in Stratum 7.6, which pertain to enhanced data import features.

Data Steward User Designation For Stratum Cloud Imports

Security Administrators can be granted Data Steward rights, which is a new status aligned with Stratum’s recent data import and data management enhancements.

- Data Stewards have full access to data import features — they can import data* from all cloud and local sources of data that have been defined for their environment.
- Also, Data Stewards can use either the Stratum Cloud API or the Data Import windows in Stratum Viewer to initiate their data imports. Both tools are available to them. Stratum users who aren’t Data Stewards can import data only from local sources and only from the Data Import windows in Viewer.

***Note:** Data can only be imported into measures from categories that have been assigned the “Enhanced” Stratum data model architecture, which is handled via Category maintenance.



User Profile Maintenance

Accessibility

User Profile Group: Brand Managers West

Level: Security Administrator Data Steward

Role: Select a role...

Override Home Page (ex. http://www.silvon.com)

Data Copy Authority: All

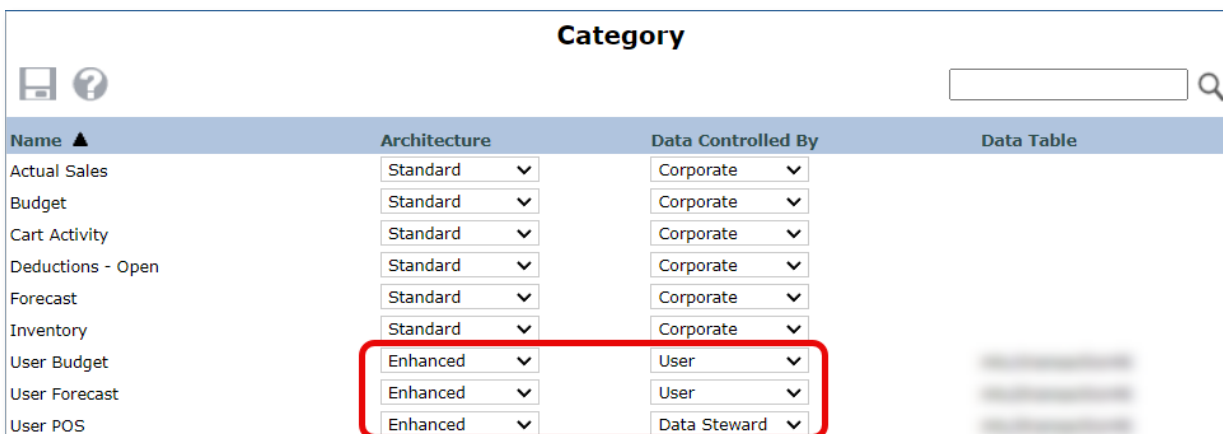
View Pane

Category Maintenance Properties For Data Import Features

Updated settings in Category maintenance are used to control which Stratum measures can be used with Data Import functionality and the types of users allowed to do imports.

- Setting a category’s “**Architecture**” to Enhanced is one step in enabling it for use with Data Import functionality.
- A category’s “**Data Controlled By**” property adds another layer of control. For Enhanced categories meant to be used with Stratum Cloud Import, that property must be set to “Data Steward”. That allows Stratum administrators with Data Steward rights to import data from either cloud or local data sources. Setting an Enhanced category to “User” controlled allows more users to import data into the category’s measures. In that case, Data Stewards can still import data from cloud or local sources while other users who aren’t Data Stewards can import data from local sources only — such as local SQL Server databases or Excel files.

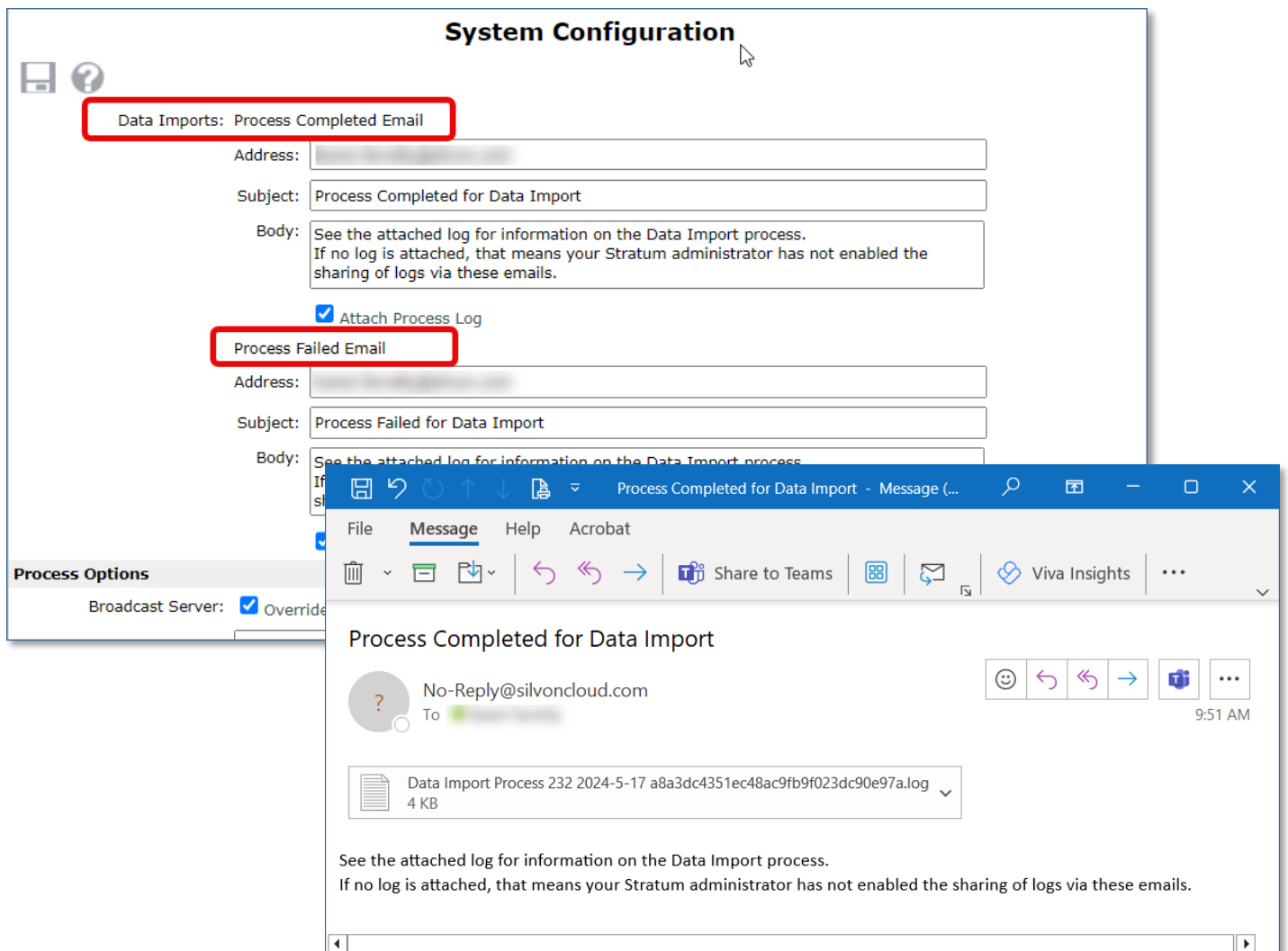
Note: Measures from categories with a Standard architecture have corporate sources of data (Order Entry or ERP, for example) and they can be used with Data Copy and Planning functionality.



Name ▲	Architecture	Data Controlled By	Data Table
Actual Sales	Standard	Corporate	
Budget	Standard	Corporate	
Cart Activity	Standard	Corporate	
Deductions - Open	Standard	Corporate	
Forecast	Standard	Corporate	
Inventory	Standard	Corporate	
User Budget	Enhanced	User	
User Forecast	Enhanced	User	
User POS	Enhanced	Data Steward	

Email Notifications For Tracking Data Import Activity

Administrators can keep better tabs on Data Import activity through system-generated emails. The emails notify designated recipients that an import has been initiated and whether or not it has processed successfully. Processing logs showing details of the imports can optionally be attached to these emails. Security Administrators control notifications using a section in the new System Configuration window.



Specifying A Sender For Processing Emails

There's also a new Email From Address property in the System Configuration window. It's used by administrators to specify the email address that will show as the sender of the Data Import processing notification emails.

Process Log Attachment Security For Hosted Environments

For hosted environments, Silvon has validations in place to prevent processing logs from being attached to system-generated emails if a recipient's email isn't associated with Silvon's hosted domain for Stratum Cloud. This protects sensitive information from being shared with non-administrators or outside email addresses. For example, logs would only be sent to emails from @silvoncloud.com or @silvon.com.

Security Administrators in hosted and on-premise environments always have the option of excluding processing logs from all system-generated emails regardless of the recipient's email address. Logs will only be sent if the property for attaching logs has been selected. That notification option exists in Stratum Viewer for Broadcast Server and Data Import processing and in Stratum Connector for database processing.

Recap Of Stratum 7.X Releases

Version	New & Updated Features
7.6 <i>Q1 2025</i>	Options to use SQL Server databases, text files, and CSV files as sources of data for your data imports. Initiate cloud imports from Azure sources with Stratum Cloud Import. Flexibility to use either Viewer or the Stratum Cloud Import API to initiate imports. Mapping templates to automate data import mapping and configuration. A focused Application Options window any administrator can use to control the look and feel of Viewer. Security and environment settings moved to a new System Configuration window for management by security administrators. A Create Tabular Database Utility for previewing Stratum Data in a tabular database.
7.5.4 <i>Feb 2024</i> & 7.5 <i>Q2 2023</i>	What's New PDF & Admin Notes PDF – A Stratum Glossary for looking up details about your Stratum Data Model, including custom descriptions added by administrators to help users understand their data. A Stratum Count function (part of the Stratum Functions) to calculate counts of items in a view. Options for adding KPI data to views (Minimum, Maximum, Average, Median, Standard Deviation, Variance). Filter options for a view's attribute relationships, which can be treated as either text or numbers. Option to attached drilldown views to individual measure items. A refresh of many Stratum windows. Support for Windows Server & SQL Server 2022 was added for versions 7.5 or greater of Stratum.
7.4 <i>June 2022</i>	What's New PDF – New charting widget features for Stratum Dashboards. Hosted Stratum implementations were integrated with Microsoft Identity and Azure Active Directory identify services, allowing for single sign-on across apps and other security benefits. Stratum Access Hub (Broadcast Manager) updated with email options to keep administrators informed about action, broadcast group, and broadcast schedule processing.
7.3.1 <i>Oct 2021</i> & 7.3 <i>June 2021</i>	What's New PDF – Stratum View Pane to access all views and track Favorite and Recent views. Search shortcut in top panel to find views. A “Run In A New Tab” option to opens views from search results in new tabs and keep search results visible. A StratumView.aspx page for easier 3 rd party Stratum view access. Filter options for Stratum Dashboards URL's to create tailored home pages for users and a Save As shortcut to create new dashboards. A central menu in Stratum's top panel to access all help, admin tools, and specialty features. Options to customize the look of the Stratum View Pane and preview various formatting selections before applying them to views. New Connectors – Stratum Connector For Excel Add-In to get data into/out of the Stratum Data Hub to/from Excel (Watch Video). And the “Go To Stratum” Power BI extension that links reports in Power BI directly to more detailed data in Stratum Views.
7.2 <i>Dec. 2020</i>	What's New PDF – Master Data Augmentation and User Controlled Attribute functionality to supplement existing core Stratum data. New grid formatting options to enhance the style of reports. Administrators can control attribute availability in views and which display by default when their levels get used in views. Level filtering has a, Include/Exclude choice (include only the designated members or see all members except designated ones. Shortcuts to edit captions, format string, and fill color when editing measure items from the Measures window. Streamlined step for copying view URL's to share.
7.1.2 <i>Aug 2020</i>	What's New PDF – New tools listed below for working with Stratum data. Shortcuts for setting up calculated measure item captions, options to control detail for emailed views and Excel exports and the order of views attached to Actions, and ability to track who actively uses Stratum. More icon choices for Conditional Formats and custom logos to help distinguish between multiple Stratum environments. Data Import – Bring budgets, market trends, plans, and other outside data that compliments enterprise data into the Stratum Data Hub. Immediately see imported data in Stratum for centralized analysis with the rest of your business data. Watch Video . StratumLink – A web-based ETL for Stratum power users to pull high volumes of additional core business data into the hub from complex data sources (ERP, CRM, custom databases, IoT systems, cloud sources). See newly loaded data shows in context with other enterprise data. Watch Video . Stratum Dashboards – All-in-one resources for highlighting complimentary Stratum reports, charts, and outside content. Leverage existing content in new ways to give broader insights into business performance. Drill to other reports or link to other resources from items in a dashboard. Learn More . Stratum Power BI Connector – A bridge between Microsoft Power BI and your Stratum data. Stratum Power BI Connector provides Stratum Data Hub access to your Power BI Users while capitalizing on your existing Stratum reports and the hub's security model. Learn More .