



Silvon Stratum Power BI Connector

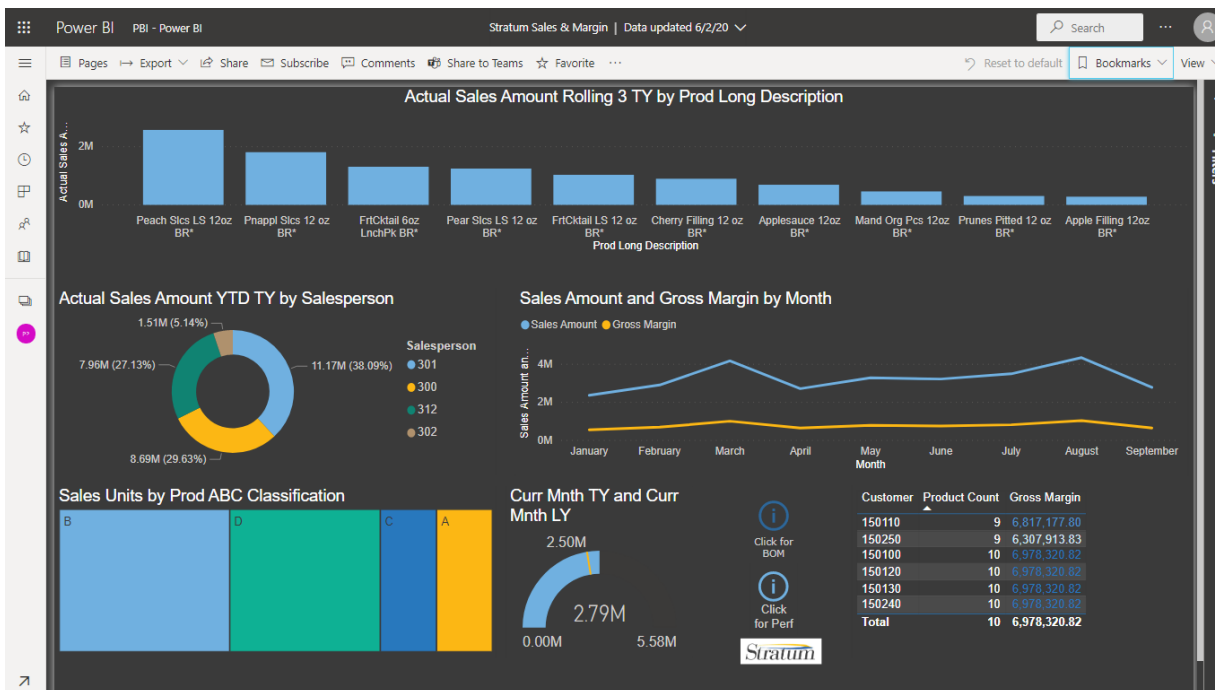
Enhancement For Stratum Viewer

Extend Reporting & Analysis Options With Stratum Power BI Connector

Silvon has paired our Stratum Modern Data Hub with Microsoft Power BI to further enhance your Stratum investment. This powerhouse duo delivers a new way of accessing your Stratum data and sharing it with key business stakeholders. This enhancement delivers on Silvon’s commitment to meet the varied reporting and visualization requirements of your content consumers while guaranteeing a single version of the truth from wherever they access Stratum data.

Stratum Power BI Connector provides access to your Stratum Data Hub, capitalizing on your existing Stratum reports and the hub’s security model. Use Power BI to **create dashboards for conveying a broader picture** of business operations, performance, or other topics important to your organization. **Easily share these dashboards** with individuals or groups of users. Realize these benefits when you roll out Power BI dashboards fueled by the Stratum Data Hub:

- **Securely Explore Content Beyond Stratum Apps** – Extend the value of Microsoft Power BI by giving your Power BI users access to the Stratum Data Hub, which has a robust security model to protect data integrity.
- **Leverages Your Stratum Investment** – Power BI users do not have to be Stratum experts. They simply connect to the Stratum Data Hub using the Stratum Power BI Connector and pick from pre-existing, user-defined Stratum reports to find the exact data desired for building their Power BI dashboards.
- **Seamlessly Integrates With Stratum** – In addition to using your existing Stratum reports to provide data to your Dashboards, using Power BI’s drill thru capabilities, you can also include links to your Stratum reports. This lets the user seamlessly move from your PowerBI Dashboard (built using your Stratum data) to your detail Stratum reports.
- **Guarantee Single Version Of The Truth** – Fuel Power BI dashboards with the same Stratum data used by Viewer. Having this ability provides better reporting accuracy because everyone who accesses Power BI (or other apps like Excel and Stratum dashboards) is working with the same enterprise data across your organization. Trust that data everyone sees is complete, consistent, and accurate because its managed by the Stratum Data Hub.



Note: Power BI Connector functionality is part of the Stratum Broadcast Server application. It is available as of Version 7.1.2 of Stratum.Viewer. Contact Silvon Support at CustomerSupport@silvon.com for info about getting the Power BI Connector.