

STRATUM VIEWER DATABASE

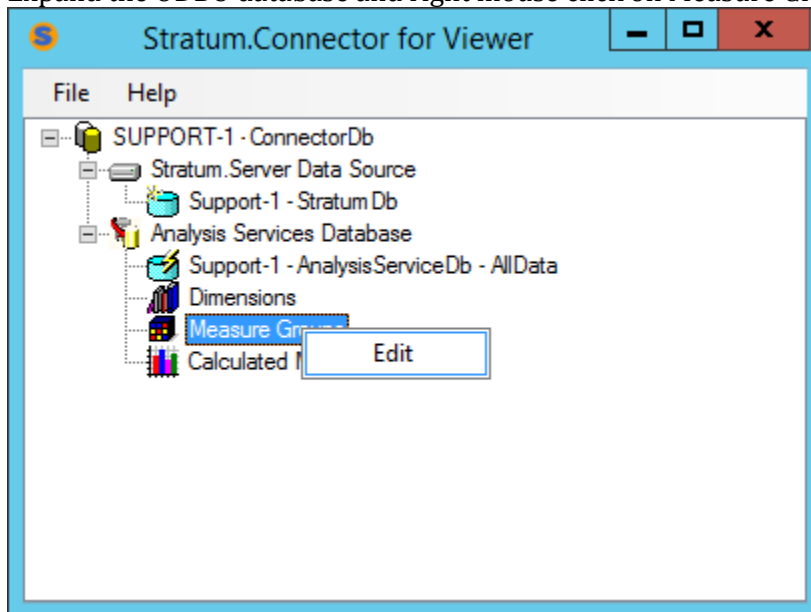
YEARLY MAINTENANCE STEPS

IMPORTANT NOTE:

* The New Year must be defined in ViewSet Item bucket mapping within Stratum database. See the Stratum database Yearly Maintenance documentation.

* The Viewer preprocessing for LOADOLAP and CRTOMAST must be run. Therefore, the New Year must be defined in your LOADOLAP process.

- In Stratum.Connector for Viewer application expand the Connector database.
- Expand the ODBO database and right mouse click on Measure Groups to select Edit.



In Measure Group selection:

- Expand the selected Measure Group.
- Expand the Years and select box for the New Year.
- Repeat these steps for each Measure Group and select Save button

